



**County of San Mateo
Department of Public Works
Utilities-Flood Control-Watershed Protection**

**Plan Review
2184 and 2185 Cobblehill Place, San Mateo**

To: Bob Pellegrine, 225 Demeter Street, East Palo Alto, CA 94303
From: *JL* Julie Young, Senior Civil Engineer, Utilities-Flood Control-Watershed Protection Section
cc: Daniel Ver Linden, Wastewater Collection Supervisor
Adolfo Orellana, Public Works Technician, Development Review Unit / Permit Section (without plans)
Date: November 10, 2021
Subject: Sewer/Streetlight Review, 2184 and 2185 Cobblehill Place, San Mateo, Final Submittal

Reason for Review: Storm Drain Inlet Installation – DPW2020-00363

Plan Identification: Highland Estates – Street Improvement Plans; 2184 and 2185 Cobblehill Place, San Mateo; APN 041-101-440 and 041-101-430; Nexgen Builders, Inc.; Plans Submitted 10/26/2021

Reviewer: Amanda Tse

Submittal/Review No.: 2 (Final)

The Crystal Springs County Sanitation District (Sewer District) and the Bel Aire Lighting Maintenance District (Lighting District) have reviewed and approved the sanitary sewer (section between the property line cleanout and Sewer District main) and lighting elements of the submitted plans with **modifications** as shown. The applicant is reminded of the following conditions of final approval:

Sewer Comments

1. All storm drain facilities shall be constructed per the approved plans. Any changes in design shall be submitted to the Sewer and Lighting Districts for review and approval.
2. If a pre-construction CCTV inspection of the sewer mains is not performed, any defects identified in the post-construction CCTV inspection shall be the responsibility of the applicant and repaired by applicant.
3. The Sewer District must be notified of the schedule of construction prior to work commencement.

Lighting Comments

4. There is one (1) Lighting District maintained streetlight located within the project limits. Care must be taken to protect the existing light pole and any wiring associated with it during construction. Any damages to the Lighting District facilities during the construction shall be repaired by the Contractor per the Lighting District standard details and at the Contractor's expense. The Lighting District must be notified of any damages to the lighting facilities and any repairs must be inspected by a Lighting District representative.

If you have any questions regarding this review or any of its contents, please contact staff at (650) 363-4100.

Attachment: Approved Plans with Modifications



October 26, 2021

Amanda Tse
County of San Mateo
Crystal Springs County Sanitation District
555 County Center, 5th Floor
Redwood City, CA 94063

Subject: Highland Estates – Street Improvements Plans, 2184 and 2185 Cobblehill Place,
San Mateo County
BKF Response to County Sanitation District Review Comments

Dear Amanda Tse:

We have received updated Plan Check Review Comments, dated October 18, 2021, for the Highland Estates – Street Improvements Plans, 2184 and 2185 Cobblehill Place and have made the necessary revisions to the plans based on comments received. BKF has prepared responses, indicated in **bold** text, specific to the comments in the review letter:

Civil – 2184 and 2185 Cobblehill Place:

1. *Any crossings in the vicinity of an existing sewer manhole shall have a minimum clearance distance of 5' radius from the center of the manhole cover. The storm drain line shall be re-aligned to meet this requirement*

Storm drain line has been realigned to maintain a minimum of 5' horizontal clearance to the existing sewer manhole. See sheet C3.10.

2. *All sewer main and lateral crossings must be located and potholed prior to storm drain installation to determine the exact depth. This note shall be added to the plans.*

Note has been added to plans. See sheet C3.10.

3. *The proposed storm drain shall not be installed directly above and within the Sewer District main trench limits. This note shall be added to the plans.*

Note has been added to plans. See sheet C3.10.

4. *Care must be taken to protect the existing Sewer District facilities during construction. Any damages to the Sewer District facilities during the installation of the storm drain shall be repaired by the applicant per the Sewer District's standard details and at the applicant's expense. The Sewer District must be notified of any damages to the sanitary sewer facilities and any repairs must be inspected by a Sewer District representative. Sewer District standard details can be found on our website at <http://publicworks.smcgov.org/sewer-services>. This note shall be added to the plans.*

Note has been added to plans. See sheet C3.10.

255 Shoreline Drive
Suite 200
Redwood City
California 94065
phone 650.482.6300
fax 650.48.6399
www.bkf.com

5. *The proposed storm line appears to be parallel to the Sewer District Main. The horizontal distance between these utility lines shall be labeled on each sheet and where distance changes. If the horizontal clearance from edge of pipe to edge of pipe is 5' or less or if the proposed storm drain crosses the Sewer District mains, the following closed circuit television inspection requirement is required:*
 - a. *The applicant or contractor shall perform closed circuit television (CCTV) inspection of the sanitary sewer mains within the project vicinity before and after construction to verify that no damages have occurred to the sewer facilities during construction of the storm drain. The video inspection shall be performed in accordance with the requirements described in the Special Provisions for Closed Circuit Television Inspection of Sanitary Sewer Mains (a copy can be obtained from our website at <http://publicworks.smcgov.org/sewer-services>) and labeled with the Sewer District manhole numbers. The CCTV inspection videos shall be submitted to the Sewer District for review. Any damages to the Sewer District facilities caused by the installation of the storm drain that are revealed in the CCTV inspection shall be repaired by the applicant per the Sewer District's standard details and at the applicant's expense. The Sewer District must be notified of the schedule of CCTV work prior to commencing. A note indicating these requirements shall be added to the project plans.*

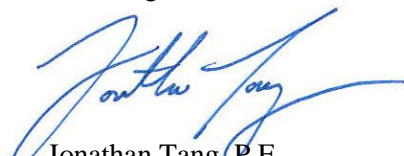
Notes have been added to plans. See sheet C3.10.

6. *If a pre-construction CCTV inspection of the sewer mains is not performed, any defects identified in the post-construction CCTV inspection shall be the responsibility of the applicant and repaired by applicant.*

Noted.

Should you have any questions, comments or need further clarification regarding the responses to your plan check review comments in this letter, please contact me at (650) 482-6306.

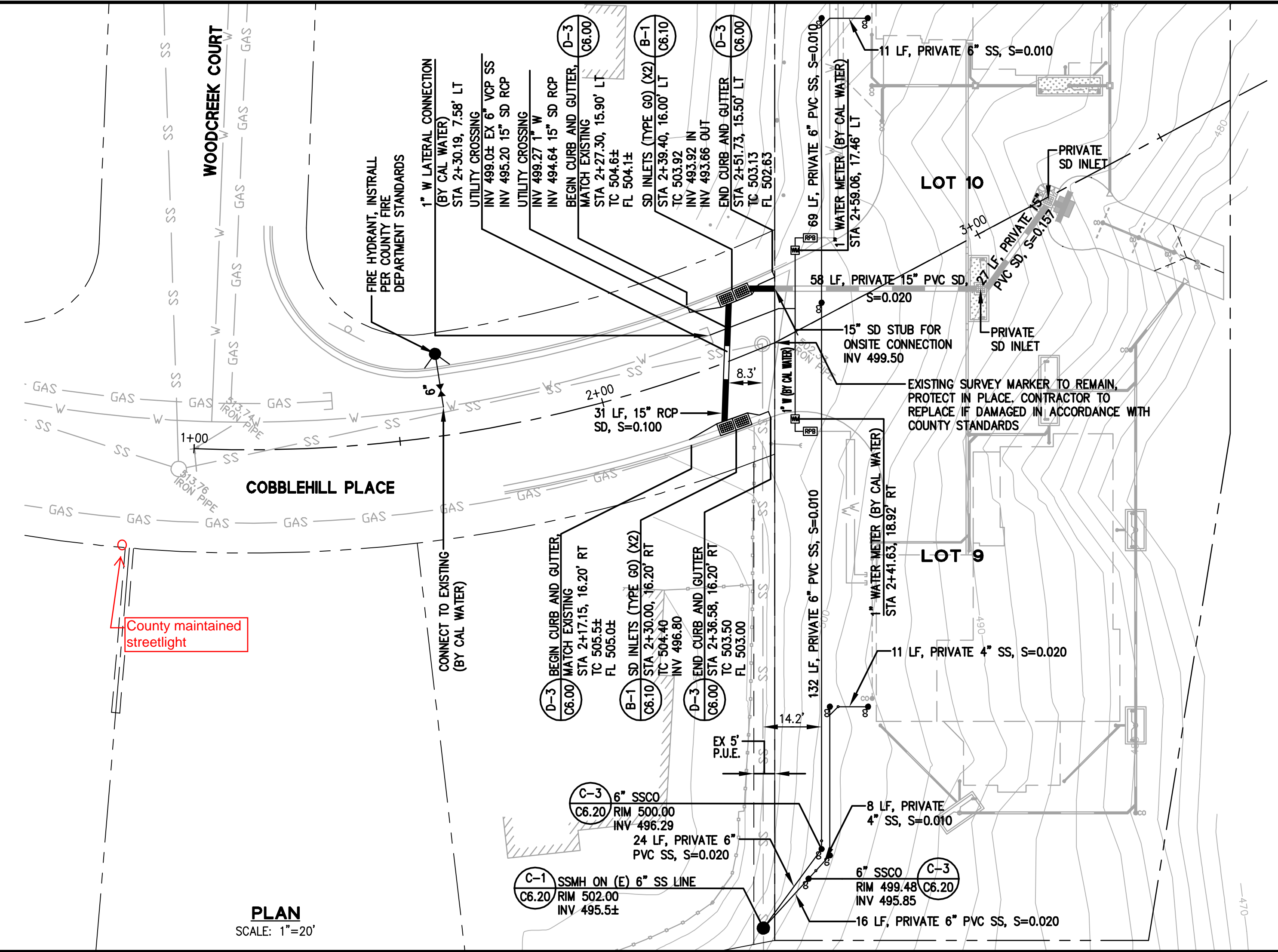
Sincerely,
BKF Engineers



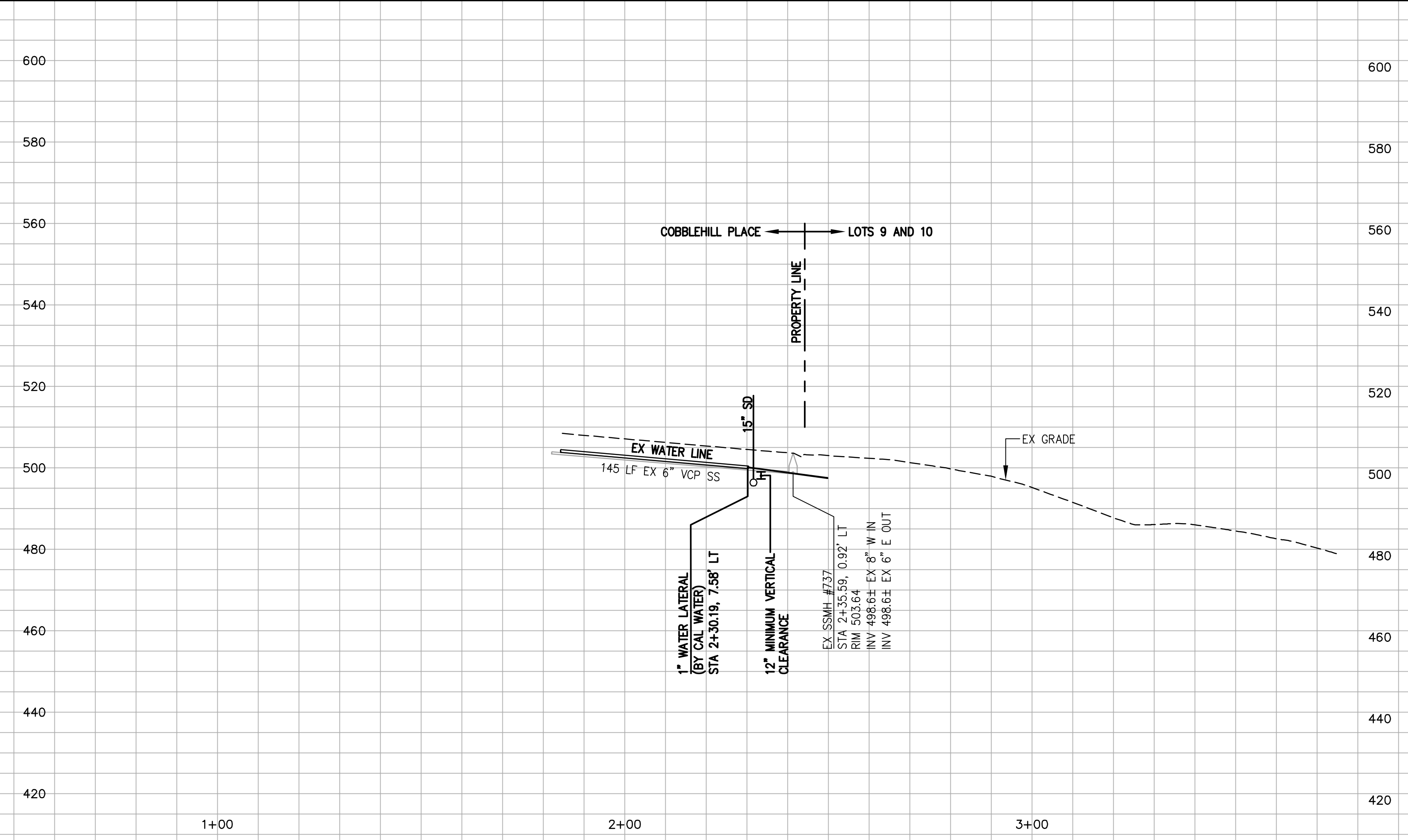
Jonathan Tang, P.E.
Project Manager

NOTES:

1. ALL SEWER MAIN AND LATERAL CROSSINGS MUST BE LOCATED AND POTHOLED PRIOR TO STORM DRAIN INSTALLATION TO DETERMINE THE EXACT DEPTH.
2. THE PROPOSED STORM DRAIN SHALL NOT BE INSTALLED DIRECTLY ABOVE AND WITHIN THE SEWER DISTRICT MAIN TRENCH LIMITS.
3. CARE MUST BE TAKEN TO PROTECT THE EXISTING SEWER DISTRICT FACILITIES DURING CONSTRUCTION. ANY DAMAGES TO THE SEWER DISTRICT FACILITIES DURING THE INSTALLATION OF THE STORM DRAIN SHALL BE REPAIRED BY THE APPLICANT PER THE SEWER DISTRICT'S STANDARD DETAILS AND AT THE APPLICANT'S EXPENSE. THE SEWER DISTRICT MUST BE NOTIFIED OF ANY DAMAGES TO THE SANITARY SEWER FACILITIES AND ANY REPAIRS MUST BE INSPECTED BY A SEWER DISTRICT REPRESENTATIVE. SEWER DISTRICT STANDARD DETAILS CAN BE FOUND ON OUR WEBSITE AT [HTTP://PUBLICWORKS.SMCGOV.ORG/SEWER-SERVICES](http://PUBLICWORKS.SMCGOV.ORG/SEWER-SERVICES).
4. IF THE HORIZONTAL CLEARANCE FROM THE EDGE OF PIPE IS 5' OR LESS OR IF THE PROPOSED LINE CROSSES THE SEWER DISTRICT MAINS, THE APPLICANT OR CONTRACTOR SHALL PERFORM CLOSED CIRCUIT TELEVISION (CCTV) INSPECTION OF THE SANITARY SEWER MAINS WITHIN THE PROJECT VICINITY BEFORE AND AFTER CONSTRUCTION TO VERIFY THAT NO DAMAGES HAVE OCCURRED TO THE SEWER FACILITIES DURING CONSTRUCTION OF THE STORM DRAIN. THE VIDEO INSPECTION SHALL BE PERFORMED IN ACCORDANCE WITH THE REQUIREMENTS DESCRIBED IN THE SPECIAL PROVISIONS FOR CLOSED CIRCUIT TELEVISION INSPECTION OF SANITARY SEWER MAINS (A COPY CAN BE OBTAINED FROM OUR WEBSITE AT [HTTP://PUBLICWORKS.SMCGOV.ORG/SEWER-SERVICES](http://PUBLICWORKS.SMCGOV.ORG/SEWER-SERVICES)) AND LABELED WITH THE SEWER DISTRICT MANHOLE NUMBERS. THE CCTV INSPECTION VIDEOS SHALL BE SUBMITTED TO THE SEWER DISTRICT FOR REVIEW. ANY DAMAGES TO THE SEWER DISTRICT FACILITIES CAUSED BY THE INSTALLATION OF THE STORM DRAIN THAT ARE REVEALED IN THE CCTV INSPECTION SHALL BE REPAIRED BY THE APPLICANT PER THE SEWER DISTRICT'S STANDARD DETAILS AND AT THE APPLICANT'S EXPENSE. THE SEWER DISTRICT MUST BE NOTIFIED OF THE SCHEDULE OF CCTV WORK PRIOR TO COMMENCING.



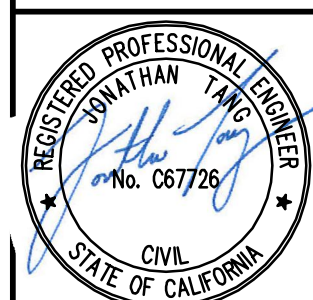
PLAN
SCALE: 1"=20'



PROFILE
SCALE: 1"=20' HORZ
1"=20' VERT

DRAWING NAME: K:\eng\95\950168\dwg\CD\Off-Site for Lots 5 - 11\C3.10-HECOPP.dwg
PLOT DATE: 10-26-21
PLOTTED BY: hoit

255 SHORELINE DRIVE, SUITE 200
REDWOOD CITY, CA 94065
PHONE: (650) 482-6300
FAX: (650) 482-6399



HIGHLAND ESTATES - STREET IMPROVEMENT PLANS
TICONDEROGA DRIVE, COBBLEHILL PLACE & COMPENS WAY
PLAN & PROFILE - COBBLEHILL PLACE
SAN MATEO COUNTY CALIFORNIA
CITY OF SAN MATEO

Date	Scale	Design	Drawn	Approved	Job No.
10/26/21	AS SHOWN	JT	AG	JT	950168-20

Sheet Number:
C3.10
OF