

**COUNTY OF SAN MATEO**  
Parks Department



**DATE:** May 14, 2015

**COMMISSION MEETING DATE:** June 4, 2015

**TO:** Parks and Recreation Commission  
**FROM:** Cecily Harris, Development Consultant  
**SUBJECT:** Green Valley Trail Planning Project Update

**RECOMMENDATION:**

Accept informational report.

**BACKGROUND:**

The creation of a recreational trail through the Green Valley has been discussed for over ten years. In 2005, the California Coastal Conservancy commissioned a study to identify a preferred route for a new non-motorized pedestrian/equestrian trail that would be known as the Green Valley Trail. The "Linking the California Coastal Trail South of the Devil's Slide Tunnel: Design and Feasibility Study for the Green Valley Trail" offered alternatives including a preferred alternative for a trail to link the Devil's Slide Trail with existing trails to the south within the McNee Ranch part of Montara State Beach. The Green Valley Trail was intended to complete a gap in the California Coastal Trail.

From the Devil's Slide Trail to the Gray Whale Cove Trail, this new trail would allow hikers, equestrians and mountain bikers to travel inland, off the shoulder of Highway 1 and experience the natural beauty of the Green Valley and get great views of the Pacific Ocean.

Once the Devil's Slide Tunnels and Devil's Slide Trail were completed, County Parks was ready to start this project. Per request from agency partners, including California State Parks, the upper parking area of Gray Whale Cove State Beach was added to the project work scope. The Green Valley Trail Project was divided into two phases, planning and construction. The planning phase has a timeline of January to December 2015. In December 2014, Questa Engineers was hired as a consultant to complete the plans, specifications, and permits during this phase. Funding for the planning phase comes from a California Coastal Conservancy grant and from the County Board of

Supervisors. Depending on any permit requirements or mitigations, construction is expected to occur in summer or fall 2016.

Project partners include representatives from County Parks, Planning, Public Works, and Supervisor Horsley's office as well as individuals from Caltrans, Coastal Conservancy and State Parks.

**DISCUSSION:**

The conceptual alignment under analysis has the Green Valley Trail located on a County Parks easement and on Caltrans and California State Parks lands. Additional easements or use agreements will be necessary. The Trail will use existing pathway, trail and road wherever possible to minimize impacts associated with new trail development and additional crossings. Of the approximately one-mile trail, only about 680 feet will be new trail construction. This new section will link existing pathways and cross the Green Valley Creek.

To date, the consultants have prepared a conceptual plan and delivered the following reports: Biological Assessment, Geotechnical Study and Hydrological Study.

County Parks has increased the amount and types of community engagement for this project. On the County Park website, a SurveyMonkey survey, online mapping tool and video flyover were incorporated into the project description. Website visitors were asked to review and respond between May 4 and May 25. For the Public Workshop, media advisories were sent to newspapers such as the Daily Journal, Half Moon Bay Review, Pacifica Tribune, and San Francisco Examiner. Social media postings were made on Facebook, Nextdoor and Twitter. Stakeholder groups including equestrians and mountain bikers were contacted as were individuals who have expressed interest in being notified about the project.

A public workshop was held on May 11, 2015. The attached Trail Segment map from the workshop shows five trail segments beginning at the Devil's Slide Trail southern parking area and ending at the upper parking area for Gray Whale Cove State Beach on the eastern side of Highway 1. At the public workshop, attendees were encouraged to ask questions and complete comment cards.

Next steps for the project include further development of the design documents, permits and CEQA study. A presentation with 60% plans and permits will be made at the August 6, 2015 Parks and Recreation Commission meeting.

When 60%, 90% and final plans are provided by the consultants, we will receive cost estimates for project construction. Final plans will enable Parks to pursue grants to supplement funds that County Parks will receive as part of the FYs 2015-2017 budget.

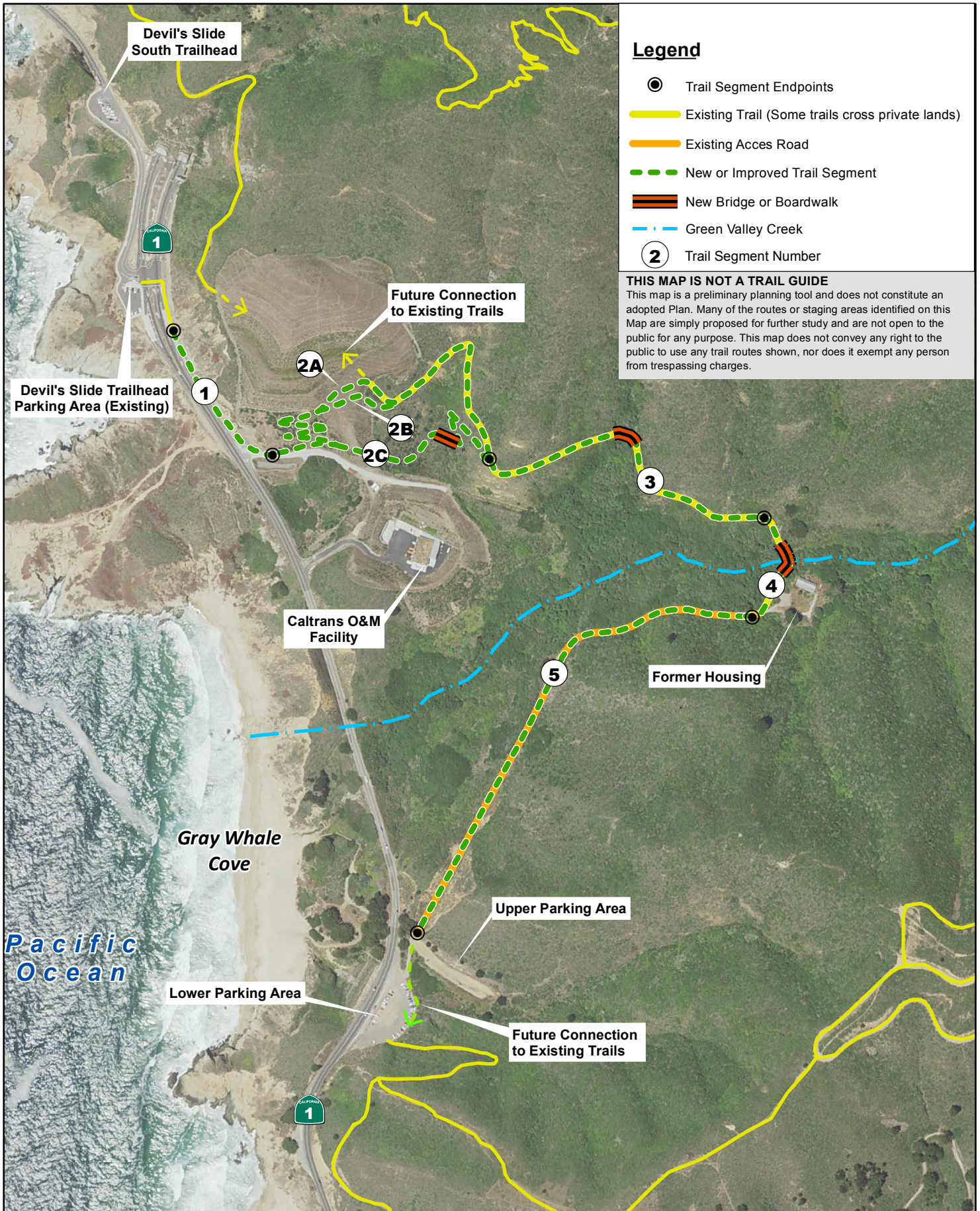


Figure 2  
**TRAIL SEGMENTS**  
**GREEN VALLEY TRAIL**

